

SPECIALITY VALVES

GENERAL

“AE” speciality valves are customised products manufactured for fire fighting purpose and utilised in projects where special design criteria warrant such valves.

They are produced within strict quality controlled environment to ISO 9001:2008 guidelines.

Fig.701 is a #300 rated 100mm NRS Gate Valve with one end ASME #300 flange and other end fitted with a 100mm Storz pumper connection. It is manufactured from LG2 Gunmetal body and pumper and copper alloy parts. It is designed for 21 bars working pressure and the test pressures for the body and seat are 31 bars and 23 bars respectively. The pumper outlet can be supplied to other national standard or customer requirements, eg, BSRT to BS336, Guillemin, DSP, NHT, etc.,

Fig.702 is a double outlet with individual controlled for open/shut feature hydrant valve generally manufactured BS5041:Part1 standard. It is horizontal pattern and is suitable for low level installation. It could also be installed on a riser manifold to suit any design requirement. The hydrant valve outlets are 65mm female BS336 instantaneous but it could also be fitted with other fire hose connection, eg., Storz, Guillemin, DSP, NHT, etc., The inlet flange is 65mm PN16 FF. Other flange eg., ASME #150 FF, etc., is available on request. The design working pressure is 16 bars and the test pressure for the valve body and seat are 22.5 bars

FEATURES

- Elegant and compact design.
- Robust construction with all non-ferrous materials
- Easy operation.
- Reliable performance with no maintenance required.

FINISHES

These valves are supplied with natural cast finished. However, it could be painted to client's colour requirement, eg., RAL3000, RAL3001, RAL3002, RAL3020 Red, etc.,



Fig.701

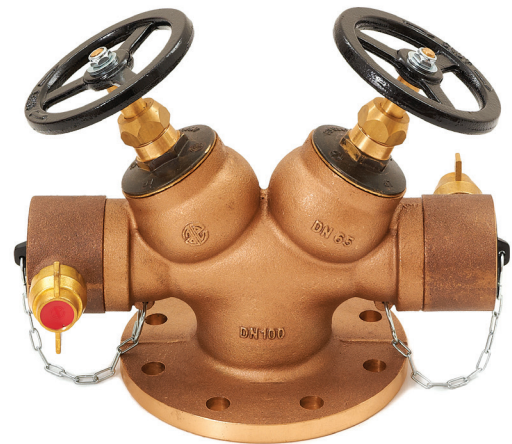
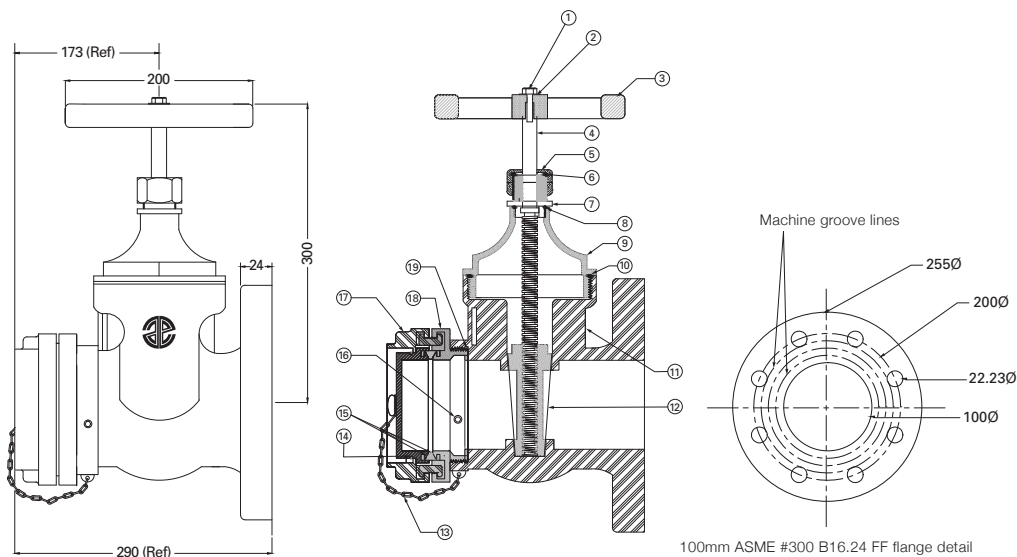


Fig.702

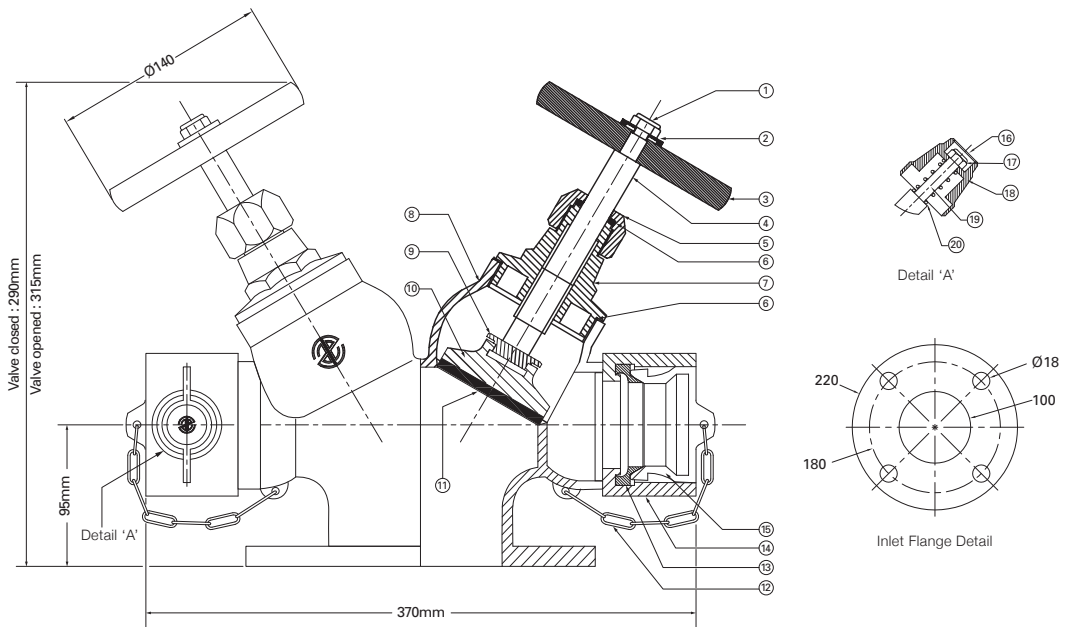
SPECIALITY VALVES



ITEM	DESCRIPTION	MATERIAL
1.	Lock Nut	Stainless Steel SUS 304
2.	Flat Washer	Stainless Steel SUS 304
3.	Handwheel	Ductile Iron
4.	Valve Stem	Copper Alloy BS2874-CZ114
5.	Gland Nut	Copper Alloy
6.	'O' Ring Seal	Nitrile Rubber
7.	Stem Retaining Nut	Copper Alloy
8.	'O' Ring Seal	Nitrile Rubber
9.	Bonnet	LG2 Gunmetal
10.	'O' Ring Seal	Nitrile Rubber

ITEM	DESCRIPTION	MATERIAL
11.	Body	LG2 Gunmetal
12.	Wedge Seat	LG2 Gunmetal
13.	3mm Chain	Stainless Steel SUS 304
14.	Circlip	Stainless Steel SUS 304
15.	100mm Storz Seal	Nitrile Rubber
16.	Allen Set Screw	Stainless Steel SUS 304
17.	100 Storz Blankcap	LG2 Gunmetal
18.	100 Storz Connection	LG2 Gunmetal
19.	Gasket Seal	Nitrile Rubber

DOUBLE OUTLET HYDRANT VALVE



ITEM	DESCRIPTION	MATERIAL
1.	Lock Nut	Stainless Steel SUS304
2.	Flat Washer	Stainless Steel SUS304
3.	Handwheel	Spheroidal Graphite Iron BS 1563:1997
4.	Stem	Copper Alloy BS2874-CZ121 PB3
5.	Gland Nut	Copper Alloy
6.	'O' Ring Seal	Nitrile Rubber BS4518
7.	Bonnet	Copper Alloy BS2872-CZ122
8.	Valve Body	Gunmetal BS 1400-LG2
9.	Disc Retaining Nut	Copper Alloy
10.	Disc	Copper Alloy BS2872-CZ121 PB3

ITEM	DESCRIPTION	MATERIAL
11.	Disc Rubber Facing	Rubber Chloroprene BS2752
12.	Chain	SUS 304 Stainless Steel
13.	Valve Outlet	Gunmetal BS1400 LG2
14.	Instantaneous Outlet Rubber Washer	Nitrile Rubber BS4518
15.	Male BS 336 Instantaneous Plug	Black Plastic or Copper Alloy
16.	Cover	Plastic or Copper Alloy
17.	Locknut	Steel Plated
18.	Lug	Copper Alloy
19.	Plunger	Copper Alloy
20.	Plunger Spring	Stainless Steel 304

* Due to the improvement in the design and standard, we reserve the right to change the specifications without prior notice.