

# 2-WAY AND 4-WAY BREECHING INLET

## GENERAL

**“AE”** Fig.135 (4-Way) and Fig.136 (2-Way) type breaching inlets are designed, constructed and manufactured in accordance with BS 5041 : Part 3 : 1975.

The materials used in the manufacture of the breaching inlets are in conformity to the standard's requirement. The body is casted from spheroidal graphite iron and the inlets are made of BS1400 LG2 gunmetal and copper alloy parts with bronze spring, stainless steel locknut, washer, etc.,

The internal part of the breaching inlet bodies are coated with “black” epoxy cold tar paint which is a good anti-corrosion protection.

The inlet blankcaps are rubber with chrome chain. Brass or gunmetal blankcaps are also available on request.

The breaching inlets are individually hydrostatically tested on the body and inlets at 20 bars (approx. 300 PSI) and the non-return valves are tested to 1.7 bars (approx. 25 PSI) to ensure that no leaks are evident under such low pressure as required by the standard.

The 2-Way and 4-Way outlet flange connections are 100mm and 150mm PN16 FF (standard) respectively. Other flange connections eg., BS10 Table 'D' or 'E', ANSI #150 flat-face (FF) or raised-face (RF) are available upon request.

---

## FEATURES

- Compact and elegant design with excellent flow characteristics.
- High quality casting finishes.
- Corrosion resistant and quality materials used for durability, long-life and efficiency.
- Maintenance free.

---

## APPROVAL:

- BSI Kitemark KM551498 (UK)
- SETSCO Listed under PLS Class 1A (Singapore).



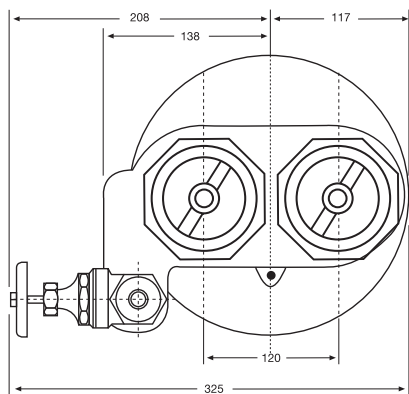
Fig.135



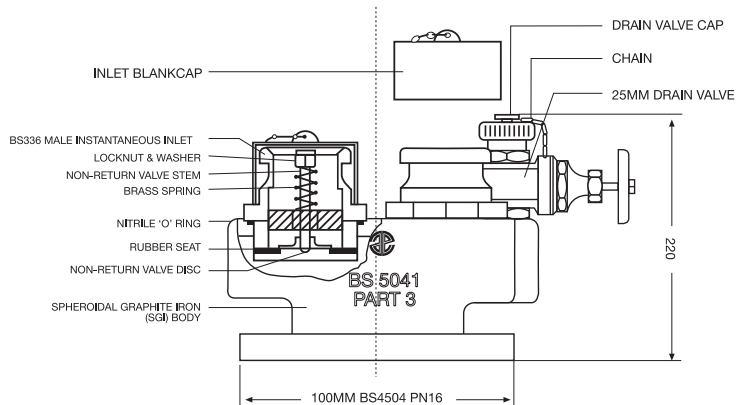
Fig.136

# 2-WAY AND 4-WAY BREECHING INLET

## 2-WAY BREECHING INLET

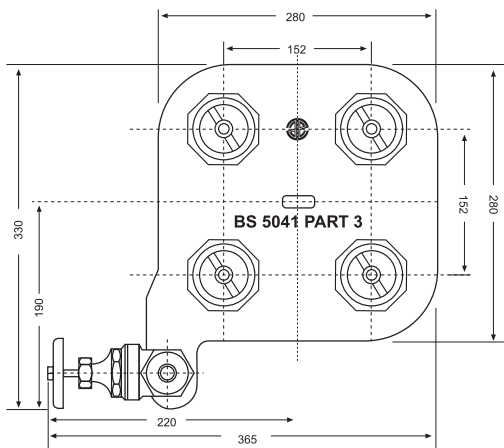


PLAN VIEW

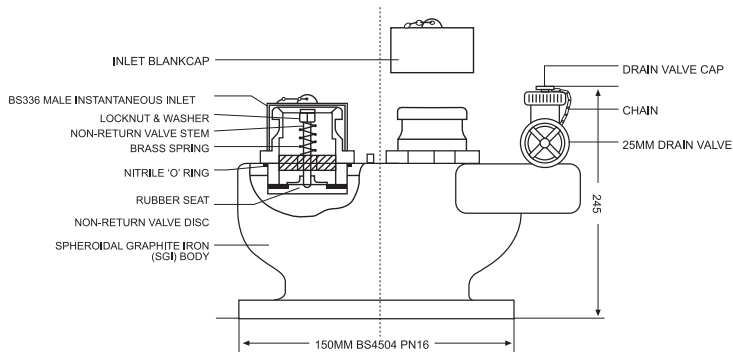


SIDE VIEW

## 4-WAY BREECHING INLET



PLAN VIEW



SIDE VIEW

\* All dimensions shown are in millimetres.

\* Due to the improvement in the design and standard, we reserve the right to change the specifications without prior notice.